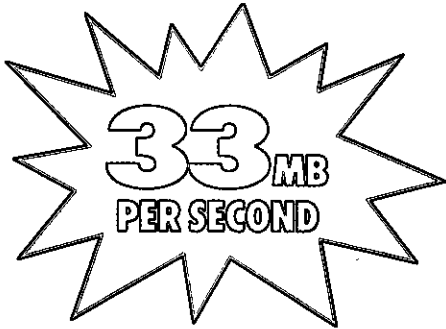


ULTRA 33™

ULTRA ATA/EIDE ACCELERATOR

**ACCELERATE
PERFORMANCE!**



- Increase Performance
 - up to 100% with new Ultra ATA/DMA drives
 - up to 30% with EIDE/Fast-ATA drives
- Supports up to 33MB/sec burst data transfers of Ultra ATA/DMA drives
- Dual data channels support up to 4 drives
- Frees 2 EIDE ports on motherboard for more devices
- Auto-recognizes and configures drive type
- Onboard BIOS offers conflict-free, easy installation with Plug n' Play support
- Supports newest CRC enhanced data protection design†
- First to break 8.4GB drive size barrier



**PLUG & PLAY
EZ INSTALL**

**PROMISE
TECHNOLOGY, INC.**

*...Delivering the Promise
of Performance*

ULTRA33™ ULTRA ATA/EIDE ACCELERATOR

ANOTHER LEAP IN ATA/EIDE PERFORMANCE!

The Promise Ultra33 controller is the first card to offer up to 100% improved applications performance using new Ultra ATA/DMA drives and up to 30% better performance with today's EIDE/Fast-ATA drives over Intel's PCI onboard IDE controller.

UNLEASH "ULTRA" POWER

If you're building a new system or upgrading, Promise Technology's Ultra33 controller is the perfect performance choice. The Ultra33 controller easily supports Ultra ATA/DMA drives with their 33MB/sec burst data transfer rates and is fully backward compatible with today's EIDE/Fast-ATA drives.

Ultra33 ends storage bottlenecks and boosts system performance with bus mastering to reduce I/O handling by the host processor—especially true in multimedia applications. There's simply no need to wait for motherboard manufacturers to add UDMA support. Ultra33's ready to perform now!

"ULTRA" ARCHITECTURE

Ultra33 provides dual-channel Ultra ATA/DMA high performance, CRC data protection support†, advanced onboard BIOS design with PnP support, and increased IDE device options:

- Dual data channels support up to 4 drives
- Frees up both IDE channels on motherboard for additional devices such as IDE CD-ROM, tape backup, or EIDE drives
- Onboard BIOS:
 - auto-recognizes different types of drives supporting Ultra ATA/DMA, EIDE, Fast ATA or IDE;
 - allows booting from faster Ultra ATA/DMA drives;
 - permits easy installation without device conflicts
- Supports new CRC enhanced data protection that checks data integrity at a variety of drive speeds.†

SIMPLY FASTER...EVEN OVER ULTRA SCSI!

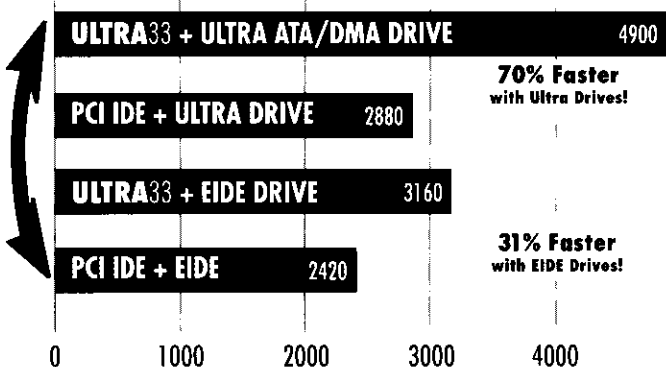
Building a new system or upgrading an existing Pentium or Pentium Pro-based PC system? Promise Technology's Ultra33 and new Ultra ATA/DMA disk drives give you the best performance edge using Windows 95 and Windows NT.* It even outperforms Ultra SCSI controller/drive combos at a fraction of the cost.

IDEAL EIDE ACCELERATOR

Ultra33 is a perfect upgrade controller. Keep your existing EIDE drives and Ultra33 makes them faster. How much faster? Ultra33 and EIDE drives will outperform Intel PCI onboard IDE running new Ultra drives! That's impressive.

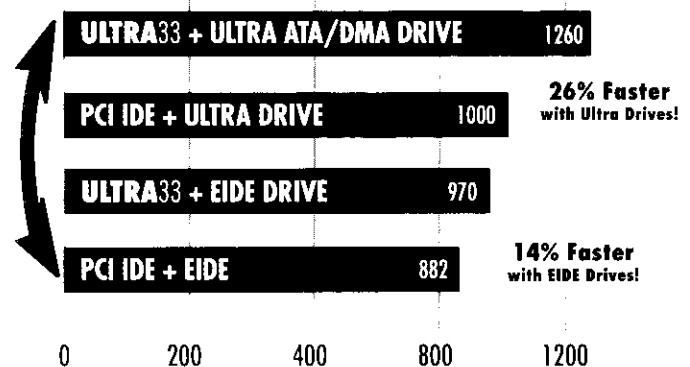
High-End Graphics Applications

102% FASTER!



Business Applications

43% FASTER!



High-End Disk Winmark '97

Results are based on Ziff-Davis WinBench 97 v. 1.0 providing High-End Disk Winmark '97 weighted scores as indicated. Test system configuration: Gateway 2000 Pentium Pro 200MHz, 32MB RAM, (EIDE drive) Quantum Fireball TM 2550A1, (Ultra DMA/ATA drive) Quantum Fireball ST 3240A1. Controllers: Promise Ultra33 1.01E (Ultra ATA/DMA), Intel PCI IDE (onboard IDE).

Disk Winmark '97

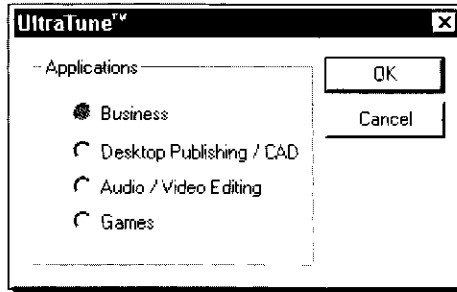
Results are based on Ziff-Davis WinBench 97 v. 1.0 providing Business Applications Disk Winmark '97 weighted scores as indicated. Test system configuration: Gateway 2000 Pentium Pro 200MHz, 32MB RAM, (EIDE drive) Quantum Fireball TM 2550A1, (Ultra DMA/ATA drive) Quantum Fireball ST 3240A1. Controllers: Promise Ultra33 1.01E (Ultra ATA/DMA), Intel PCI IDE (onboard IDE).

ULTRA ATA/EIDE ACCELERATOR

Ultra33 instantly expands data throughput for all your critical applications. Either way with Ultra ATA or EIDE drives, Promise gives you more. Get faster data handling, greater data reliability, better system performance, and more device options with two additional IDE channels. WOW!

SIMPLY SMARTER

Promise brings more than 8 years of proven IDE hardware and software drive innovation to the Ultra33 with advanced data handling and unique controller tuning for specific applications. Our Windows UltraTune™ utility lets you choose from either business, DTP/graphics/CAD, audio/video-editing or game applications. The result? A high performance, low-cost controller that's ready for tomorrow's drives today.



UltraTune™ customizes how the controller interacts with Ultra ATA/DMA drives and specific applications. Just point to your application type and watch Ultra33 take off.

PLUG AND PLAY FOR EASY INSTALLATION

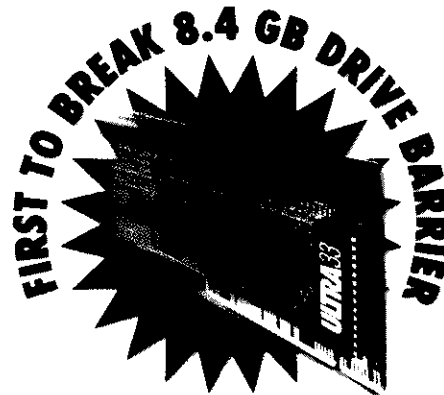
Unlike other controllers without onboard BIOS, the Ultra33 BIOS offers conflict-free, easy installation with true Plug n' Play PCI support. Promise Technology's new controller is ready today for most major Pentium-class PCI motherboards – no worries about compatibility problems.

A COMPLETE SUPPORT PACKAGE

Promise Technology offers an outstanding two-year limited warranty. Our experienced technical staff gives unlimited telephone support. Or reach us by Internet e-mail (support@promise.com), CompuServe Forum ("Go Promise"), or our Promise 24-hour BBS (408-452-1267). A Promise Fax-Back (408-452-9160) also provides the latest information on technical and driver updates.

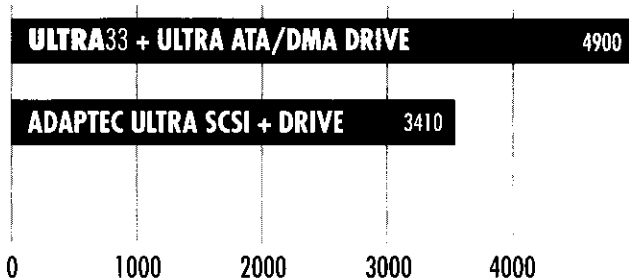
BREAKS SIZE BARRIER!!

Today's motherboards simply don't support EIDE drives bigger than 8.4GB... Ultra33's onboard BIOS raises the storage standard!



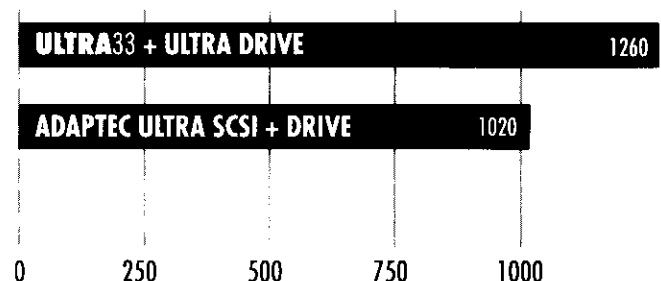
Ultra33 vs. Ultra SCSI 44% FASTER!

High-End Applications



Ultra33 vs. Ultra SCSI 24% FASTER!

Business Applications



Results are based on Ziff Davis WinBench 97 v. 1.0 providing Disk Winmark 97 weighted scores as indicated. Test system configuration: Gateway 2000 Pentium Pro 200MHz, 32MB RAM. Drives: (Ultra Wide SCSI drive) Seagate ST32171W, (Ultra DMA/ATA drive) Quantum Fireball ST 3240E. Controllers: Promise Ultra33 L01E (Ultra ATA/DMA), Adaptec 29401W (Ultra Wide SCSI)

†Supports feature for Ultra DMA/ATA drives only. ‡Never onboard Ultra DMA controllers on some motherboards may provide equivalent performance. Specifications subject to change without notice. ©1997 Promise Technology, Inc.

ULTRA33™

ULTRA ATA/EIDE ACCELERATOR

PRODUCT SPECIFICATIONS

Bus Platform	PCI
Data Transfer Rates	33MB/sec sustained and burst
# of Hard Drives	4
Drive Types Supported	Ultra ATA/DMA EIDE/Fast ATA-2
Drive Modes	Ultra DMA 2/1/0 PIO 4/3/2/1/0 (EIDE/Fast ATA) DMA 2/1/0 (EIDE/Fast ATA)
ATAPI Device Support	No <i>(CD-ROMS, Tape Drives, etc.)</i>
Onboard BIOS	Automatically identifies & configures drive type (EIDE or Ultra DMA); auto-detects & supports Ultra Mode transfers; PCI Plug n' Play; recognizes drives greater than 8.4 GB
Advanced Data Features	Windows-based UltraTune utility customizes controller for specific applications; Bus mastering offloads data I/O handling from CPU
Operating Systems Compatibility	DOS 5.x and above. Windows 3.x, Windows 95. Windows NT 3.x & 4.x



PROMISE TECHNOLOGY, INC.

...Delivering the Promise of Performance

Headquarters

1460 Koll Circle • San Jose, CA 95112
Tel: 408-452-0948 Fax: 408-452-1534
<http://www.promise.com>

Taiwan

4F No. 1 Prosperity 1st Road
Science-Based Industrial Park
Hsin-Chu City, Taiwan, R.O.C.
Tel: 886-35-782395 Fax: 886-35-782390